



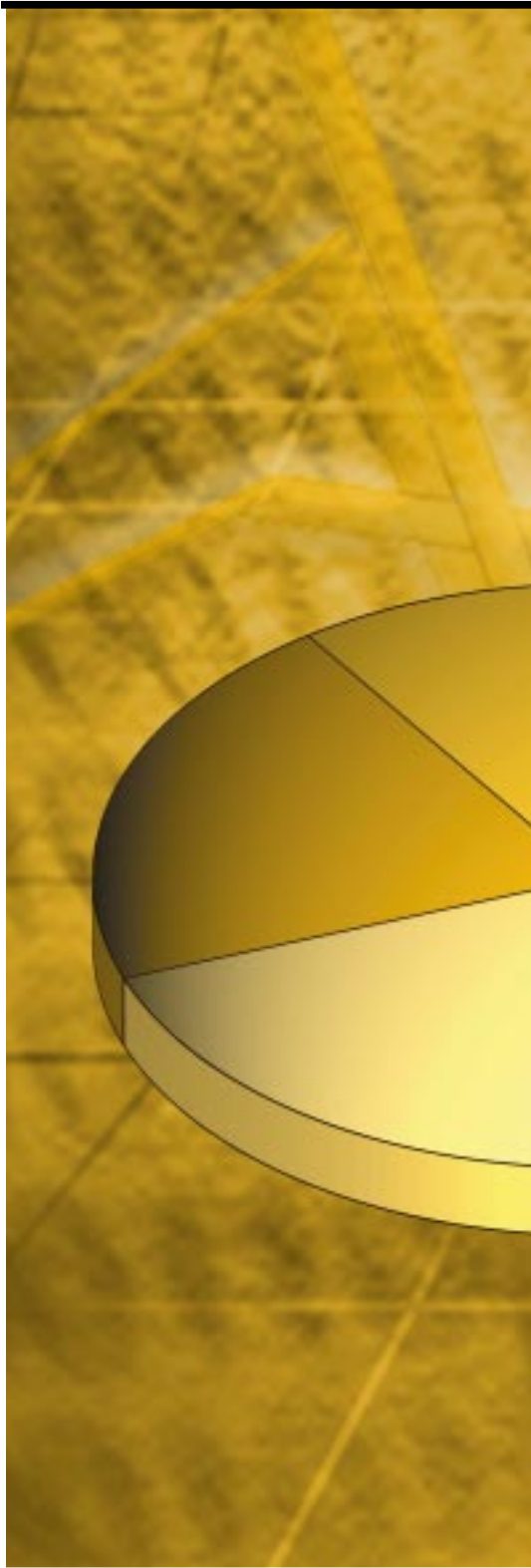
**View
the data
you want**

NotesToChart

The SoftVision developer products

"To simplify and to enhance" is the simple philosophy of our products. Simplify the task the end-users face. Enhance the functionality of the Lotus Notes based applications.

Why NotesToChart?



The "IT-World" traditionally differentiates between hard (structured) and soft (semi- or unstructured) data. This "tradition" says Lotus Notes is not suitable for use with "hard data". IT-Professionals, developers, administrators and even end-users know better. There is no Lotus Notes based office application that does not create "hard data", no help desk application..., no sales force application..., no quality management application..., no project management application..., this list could be continued without end. The most effective way to analyze data is a visual analysis. The only way however, that this could be accomplished in the past, was the use of text-based Lotus Notes views. These columns and rows of text and numbers were hard to read and even harder to analyze. To visualize the data contained in these views, the data had to be exported to external applications. Analyzing data like this brings up a number of "cons". The "opportunity" for errors is drastically increased, redundant data is created (which has to be maintained) and additional training is necessitated. NotesToChart is the solution.

What is NotesToChart?

NotesToChart is a very powerful charting tool designed to allow the creation of professional looking charts within Lotus Notes. By integrating NotesToChart, the Notes application developer can bring graphical data analysis, via Lotus Script, to any Lotus Notes application. The creative possibilities are almost endless. Complex charts, e.g.: line-, area-, point-, bar- (horizontal and vertical) and pie-charts can be

created in Notes, either through users input or via agents, viewed in Notes or via the web, sent to others by Notes mail and exported as standard bitmap formats. Don't just use one series type in a chart, NotesToChart enables the use of different types of series, all within the same chart. NotesToChart consists of two components both of which are multilingual (English/German by default), NotesToChart-Setup, the MS-Windows based tool to create chart layouts and edit a charts preferences and NotesToChart-View, the "charting-engine".

What can NotesToChart do for you?

Do you need to create charts for use within Lotus Notes or for use on the web? Do you want to enhance your Lotus Notes applications to provide graphical analysis? No problem. Use NotesToChart to visualize the data for cost or resource analysis of your project management application. Enable "at a glance" analysis of your help desks performance. Run NotesToChart on a Domino server to allow charts to be created automatically from predefined layouts saved in Notes and distribute the charts via Lotus Notes mail. Export charts as standard bitmap formats or save charts as vector graphic formats. Allow users to edit chart layouts or disallow end-user editing by use of templates. Maintain chart layouts in Lotus Notes databases or manage charts as files on the file system. The possible uses for NotesToChart are endless. The integration of NotesToChart to any Lotus Notes application enables the immediate analysis of mission crucial data. Present information in a way that it can be understood. Work the way you want, get the information you need.

Technical Data

Available platforms:

NotesToChart-View

For the Lotus Notes Client (starting Version 4.1)
MS Windows '9x, MS Windows NT (3.51, 4.0)
MS Windows 2000

NotesToChart-Setup

MS Windows '9x, MS Windows NT (3.51, 4.0)
MS Windows 2000

NotesToChart

- Create charts for the web or for the Notes-client
- Runs as back-end (agent) or front-end (button, agent, etc.) task
- Save layouts in Notes databases or on the file system
- Different series types: lines, areas, points, bars (horizontal and vertical), pies
- Layout-editor for visual chart design
 - Definition of chart parameters via preference dialogue
 - Backgrounds (color, bitmap, frames)
 - Legend (legend information, color, position)
 - Axis (position, automatic or manual scaling of the axis, title)
 - Chart walls (color, texture)
 - Diagram title (text, color, font, size, position)
 - Series values (description, color, information about values, formats)
- Define all chart options via Lotus script
- Chart export (BMP, WMF, EMF)
- Print charts with preview
- Simultaneous display of multiple charts
- One chart can show multiple series (different types) in one
- Complete integration in Notes application via Lotus script
- End user can set chart options (if authorized)
- Real time 3D rendering of charts
- "Zoom in" and "zoom out" of charts
- Scroll charts
- Multilingual on the fly

Your Salespartner:

Workstation based software

The basis of NotesToChart are DLL's on the Notes workstation. No additional components are necessary for the Notes Server/Domino Server.

SoftVision Development GmbH
Kurfuerstenstrasse 15
D-36037 Fulda, Germany
www.svd-online.com

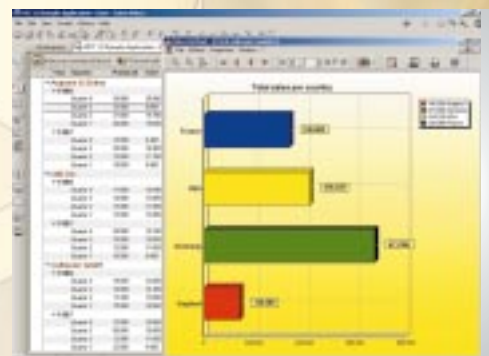
Phone: +49(0)661/25100- 0
Fax: +49(0)661/25100-25
e-mail: info@svd-online.com



Create chart layouts as templates to be called from Lotus Notes with NotesToChart-Setup.



Use the integrated designer to set all chart parameters for the end-user.



A simple mouse click creates a chart.