



ExtraFax is the solution to your fax server needs. Running either on your Lotus Domino server or Notes workstation, ExtraFax integrates your fax machine with your email system, creating a powerful communication tool. Now you can send and receive faxes all within the familiar interface of your Inbox. With user mobility and convenience in mind, ExtraFax lets you send and receive faxes wherever you have email or web access. Regardless of whether you are at the office or on the road, you can keep in contact with clients.

ExtraFaxTM

Cost Effective

ExtraFax is a cost-efficient alternative to ordinary fax machines. Not only can you eliminate the need for

additional gateway hardware, but you also save on long distance bills by using ExtraFax's Least Cost Routing through the Internet/Intranet. As well, ExtraFax's automatic routing of inbound faxes based on DID/

DTMF/ CSID/ Incoming Channel reduces manual administration costs.



Load Balancing and Fail-over capabilities

Load balancing and failover functions enable ExtraFax to handle documents securely. ExtraFax routes all sending and receiving fax jobs to a central queue. When there is more than one server, ExtraFax

employs load balancing to distribute the fax jobs according to the loading of each server. ExtraFax's fail-over capability minimizes the risk of a single point of failure. When a server shuts down, the other servers take over the jobs allocated to the failed server.

Fax-on-Demand (FOD)

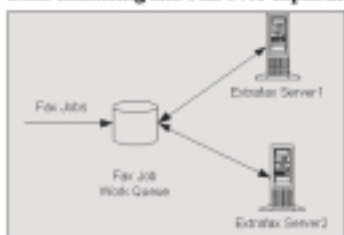
ExtraFax supports FOD for Dialogic board and integrates with Interactive Voice Response features. From a touch-tone telephone, customers can

follow a series of voice-prompted menus to request company information, ap-

plication forms, and other documents and have them delivered to their fax machines in a few seconds.



Load Balancing and Fail-over capabilities



HP Digital Sender

ExtraFax supports HP Digital Sender, enabling companies to streamline business processes. Employees can rely on fast, inexpensive, high-speed document scanning for efficient fax transmission.

Easy Installation

ExtraFax requires you to install both the server and client software on your workstation. Setup is effortless. Simply choose the components you need from ExtraFax's onscreen installation guide, and let ExtraFax do the rest. Within minutes, you're ready to send and receive faxes from your Inbox.

Multilingual Capabilities

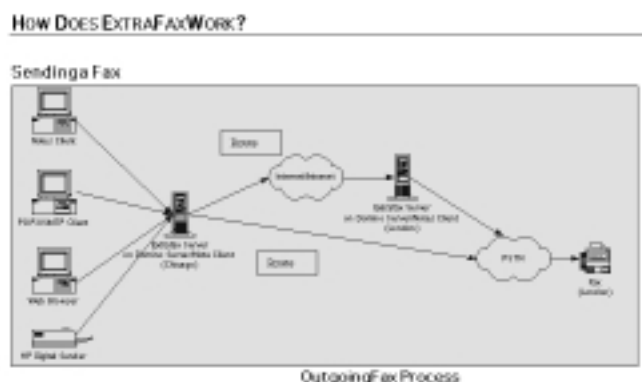
ExtraFax is available in 14 languages, including English, Chinese (Simplified), Chinese (Traditional), Czech, French, Dutch, German, Italian, Norwegian, Portuguese, Japanese, Polish, Russian, and Spanish.

Attachments

Documents from Windows-supported applications are easily included with your fax. Attachments from outside a Windows application may be imported directly into Lotus Notes, or you may use ExtraFax's Print-to-Fax driver to increase the quality of your fax images. Documents are converted into a TIFF image for transmission.

HOW DOES EXTRAFAX WORK?

Sending a Fax



Sending faxes using Notes Client, Internet mail client (POP3/SMTP), HP Digital Sender, or a web browser, ExtraFax delivers fax job request to the server for processing. When there is only one server in the environment, Extrafax sends the document to the recipient's fax machine directly via PSTN [MM1] (Route 1). When there is more than one server in the environment, Extrafax uses least cost routing to send the fax request to the closest Extrafax server (Route 2). For example, a fax job from Chicago to London is routed first to the Extrafax server in London via the Internet/Intranet. ExtraFax processes the job and faxes out from the London Extrafax server to the final destination. As a result, businesses save on IDD call charges by using the existing data networks.

Receiving a fax



All faxes travel through the PSTN to reach the Extrafax server. When receiving fax images, the Mail Router determines if the fax will be routed by DID, DTMF, CSID, port, or manual methods. If the fax does not fall into the routing table, the operator routes the fax manually to the recipient. ExtraFax sends the fax to the recipient's mailbox, where you can view the fax using Notes Client, Internet mail client, or a web browser.

Additional Features

- Least-cost routing
- Access control
- Billing and accounting information
- Inbound routing configuration
- Customizable cover pages
- Broadcasts faxes using existing mailing lists
- Prioritizes jobs and schedule transmission
- Scalable to your organization size
- Auto redials on busy signal
- Saves copy of fax for future distribution

REQUIREMENTS

Extrafax Server:

Windows NT, Windows 2000,
Lotus Domino 4.5 or above,
Lotus Notes client 4.5 or above

Extrafax client:

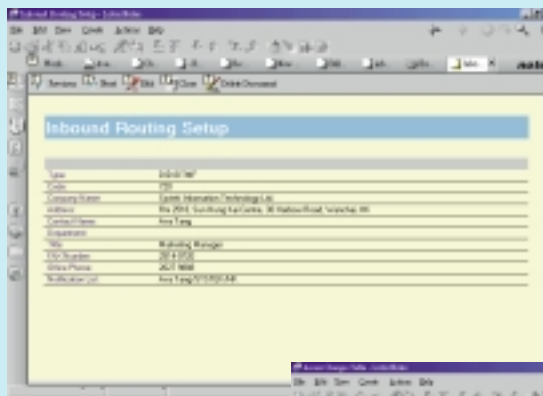
Windows 95/98, Windows NT,
Windows 2000

Supported hardware:

BrookTrout, GammaLink
faxboard, Class 1, 2, or 2.0
modem and Dialogic VFX/40ESC
Plus board

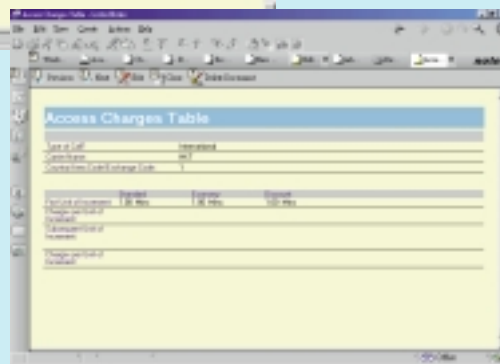
TECHNICAL SUPPORT

At Extracomm we pride ourselves on our superior customer service. Access technical support at our comprehensive web site, www.extracomm.com and:



Sending faxes using Notes Client, Internet mail client (POP3/SMTP), HP Digital Sender, or a web browser, ExtraFax delivers fax job request to the server for processing. When there is only one server in the environment, Extrafax sends the document to the recipient's fax machine directly via PSTN [MM1](Route 1). When there is more than one server in the environment, Extrafax uses least cost routing to send the fax request to the closest Extrafax server (Route 2). For example, a fax job from Chicago to London is routed first

the Extrafax server in London via the Internet/Intranet. ExtraFax processes the job and faxes out from the London As a result, businesses save on IDD call charges by using the existing data net-



- Download trial versions of ExtraFax
- Read online administration, installation, and user guides
- Participate in the discussion database
- View FAQ's

If you still cannot find what you need, email us at support@extracomm.com.

WHO IS EXTRACOMM?

Established in 1996, Extracomm is based in Canada with offices in Toronto and Vancouver. Our customers range from small businesses to major organizations, such as banks and security firms. For more information, please visit our web site at www.extracomm.com or email to sales@extracomm.com.



Suite 300-225
East Beaver Creek Road
Richmond Hill,
ON L4B 3P4
Phone: 905.762.9100
Fax: 905.762.9093

